



# Mod.880 M

EN 13241-1



(89/106/CE)



USA GLISANTA PENTRU TEMPERATURI POZITIVE

CU GROSIMEA FOII 90 mm



SLIDING DOOR FOR POSITIVE TEMPERATURE

WITH 90 mm THICK WING

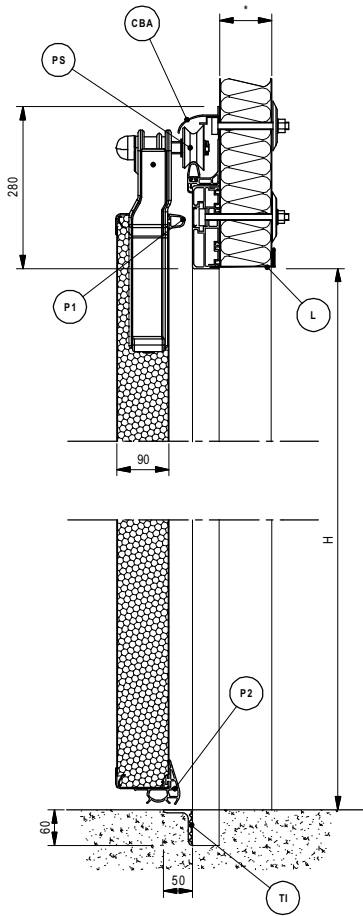


PORTE COULISSANTE POUR TEMPERATURE POSITIVE

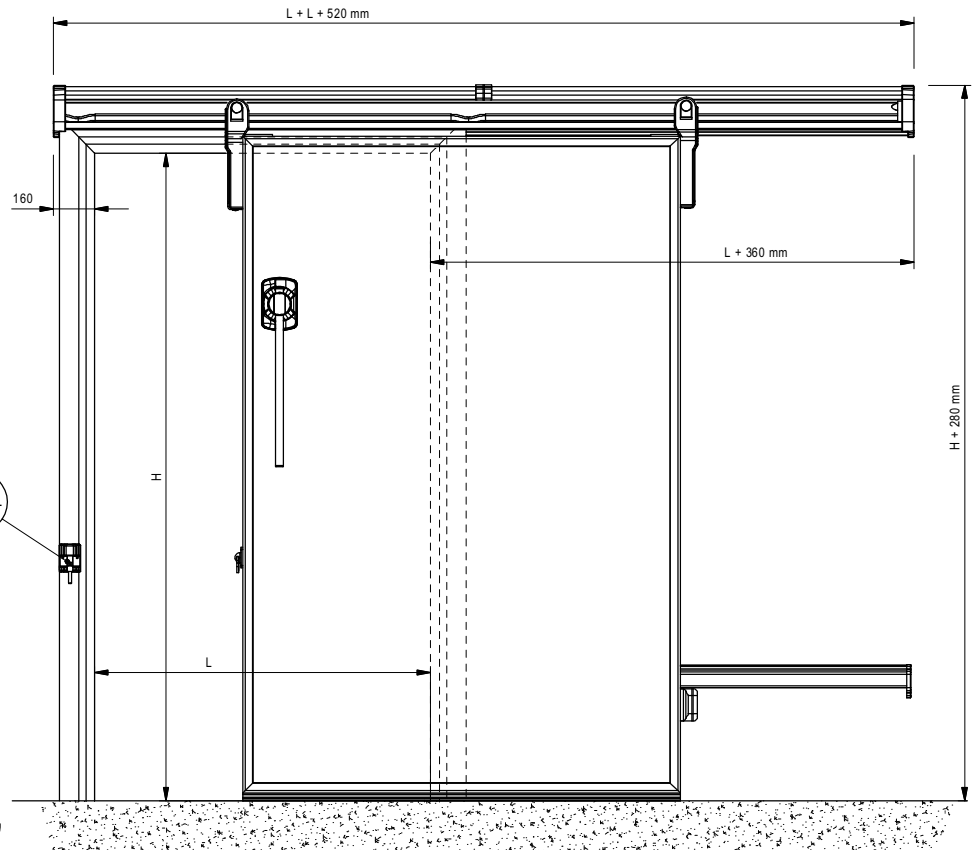
AVEC VANTAIL DE 90 mm D'ÉPAISSEUR

MIV INSULATING SYSTEMS s.r.l.

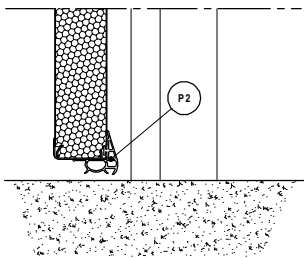
Depozitarea tehnicii și rezervă dreptul de a modifica produsul fără notificare prealabilă. Schițele, dimensiunile, pozăle din broșura sunt doar pentru informare generală și nu reprezintă elemente de elaborare a proiectelor.  
 Technical Department reserves the authorization to improve its products without notice. Drawings, dimensions, photos, on advertising depiants represent only general indication and not specific requirements to make projects.  
 Le bureau Technique se réserve le droit de modifier le produit sans préavis. Plan, dimension, et photos sur les documents de publicités doit être considéré à titre indicatif et donc non liés à l'élaboration d'une projet définitive.



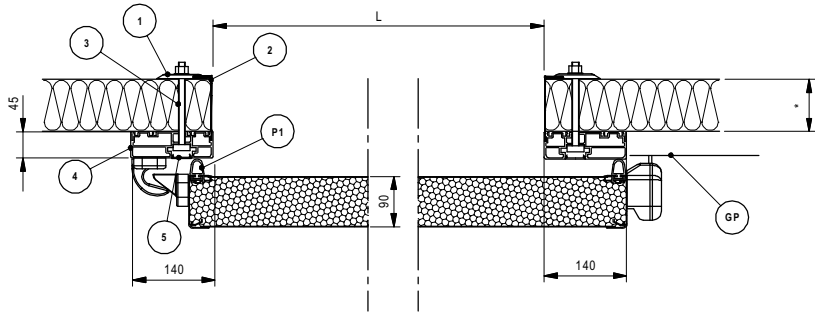
"FP"



- |                        |                         |                             |
|------------------------|-------------------------|-----------------------------|
| 1 Saiba                | 1 Washer                | 1 Rondelle                  |
| 2 Tabla de acoperire** | 2 Bended metal sheet ** | 2 Tole d'habillage **       |
| 3 Tirant din nylon     | 3 Nylon tensiod rods    | 3 Tige de fixation en nylon |
| 4 Cadru din PVC        | 4 PVC flate frame       | 4 Bati plat en PVC          |
| 5 Capac cadru          | 5 Frame cover           | 5 Bouchon du bati           |



"SS"



|     | CARACTERISTICI TEHNICE                 |     | TECHNICAL FEATURES               |     | CARACTERISTIQUES TECHNIQUES           |
|-----|--|-----|----------------------------------|-----|---------------------------------------|
| *   | Panou prefabricat de grosime variabila | *   | Prefabricated panel              | *   | Paroi prefabbrquée                    |
| P1  | Garnitura perimetrala                  | P1  | Perimetral gasket                | P1  | Joint perimetral                      |
| P2  | Garnitura inferioara                   | P2  | Lover gasket                     | P2  | Joint inferior au sol                 |
| TI  | Prag din aluminiu                      | TI  | Threshold                        | TI  | Seuil en aluminium                    |
| GP  | Ghidaj posterior din aluminiu          | GP  | Rear runner in aluminium profile | GP  | Guide postérieur en aluminium anodisé |
| CBA | Protectie sina din aluminiu            | CBA | Aluminium track cover            | CBA | Chace-rail en aluminium anodisé       |
| FP  | Prag de trecere la acelasi nivel       | FP  | Threshold for same level floor   | FP  | Seuil à fil sol                       |
| SS  | Fara prag                              | SS  | Without threshold                | SS  | Sans seuil                            |
| PS  | Role pentru glisare                    | PS  | Sliding wheels                   | PS  | Puiles de roulement                   |